

ROCKDALE COUNTY SHERIFF'S OFFICE



STRATEGIC
PLAN
2023-2024



ERIC
J.
LEVETT



STRATEGIC PLAN

This strategic plan was created with the objective of shaping future decisions and actions so that they reflect our current vision, mission, and core values. The Rockdale County Sheriff's Office (RCSO) will successfully navigate change through this plan. The RCSO embarked upon a formal strategic planning process with the help of the agency's innovative leaders.

ABOUT US

The Rockdale County Sheriff's Office (RCSO) is led by Sheriff Eric J. Levett. The second in command is Chief Dale A. Holmes. RCSO consist of five divisions led by sworn personnel holding the rank of Captain, each of which reports to the Law Enforcement Bureau Major or the Jail Bureau Major. The five divisions are as follows: Jail Division, Judicial Division, Uniform Patrol Division, Support Services Division, and Criminal Investigations Division. In addition, Office of Professional Standards, Human Resources, Background and Recruiting are specialized units reporting directly to the Chief Deputy.



Table of CONTENTS

MESSAGE FROM THE SHERIFF

VISION AND MISSION

ORGANIZATIONAL CHART

MEET OUR TEAM

STRATEGIC GOALS

GOAL: CRIME REDUCTION

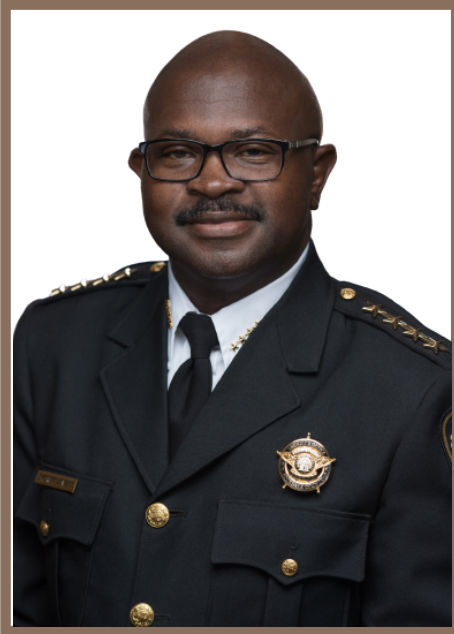
GOAL: TECHNOLOGY &
EQUIPMENT

GOAL: PROFESSIONAL,
DEVELOPMENT, HIRING, AND
RETENTION

COMMUNITY INVOLVEMENT



MESSAGE FROM THE SHERIFF



The Rockdale County Sheriff's Office is pleased to present our Strategic Plan for 2023-2024. This plan will be centered around direction and accountability while enhancing management and leadership.

This strategic plan was created to build upon our organizational strengths and the abilities of our employees while increasing our capacity to serve the community, local jail, and courts. The Rockdale County Sheriff's Office is focused on enhancing the quality of life for all community stakeholders and visitors of Rockdale County.

The Rockdale County Sheriff's Office values the public's trust and believes our most important functions are to preserve the safety and well-being of our community and jail. RCSO understands that increasing trust with the community is also depending upon the fair treatment of inmates in our jail. We aggressively pursue those who cause fear and disorder that degrade families, neighborhoods, jails, courts, and schools. We do not accommodate or appease those who knowingly disobey laws, as our Office is designed to preserve the peace in Rockdale County. Rockdale County Sheriff's Office deputies will use this Strategic Plan to accomplish the following:

- Adherence to the mission statement set for our agency
- Increase professional growth for all members of the Sheriff's Office
- Improve accountability for the agency and its individual members
- Enhance communications with internal and external stakeholders through improved technology upgrades and channels

I commend the Rockdale County Sheriff's Office personnel for their excellent work in putting this strategic plan together. Over the next couple of years, this plan will help us improve performance and provide even better service to both Rockdale County and our employees. This plan cannot sit on a shelf as an aspiration but will be a living document that will direct our work. Working together, we can make this plan come alive and ensure we arrive at that future we have defined.

On behalf of the Rockdale County Sheriff's Office staff members, we thank you for your continued support. It is our privilege to serve you.

A handwritten signature in blue ink, appearing to read 'Eric J. Levett', written in a cursive style.

Sheriff Eric J. Levett

VISION

The VISION of the Rockdale County Sheriff's Office is to continue to be a leader in law enforcement. The vision will continue to focus on FOUR PILLARS, which are:

- Six basic principles of ACCOUNTABILITY amongst operations (Jail and Enforcement);
- Enhanced ADMINISTRATIVE EFFICIENCY through technological solutions;
- Enhanced COMMUNICATION INTERNALLY;
- Enhanced EXTERNAL COMMUNICATIONS between the law enforcement partners, community, and the RCSO.

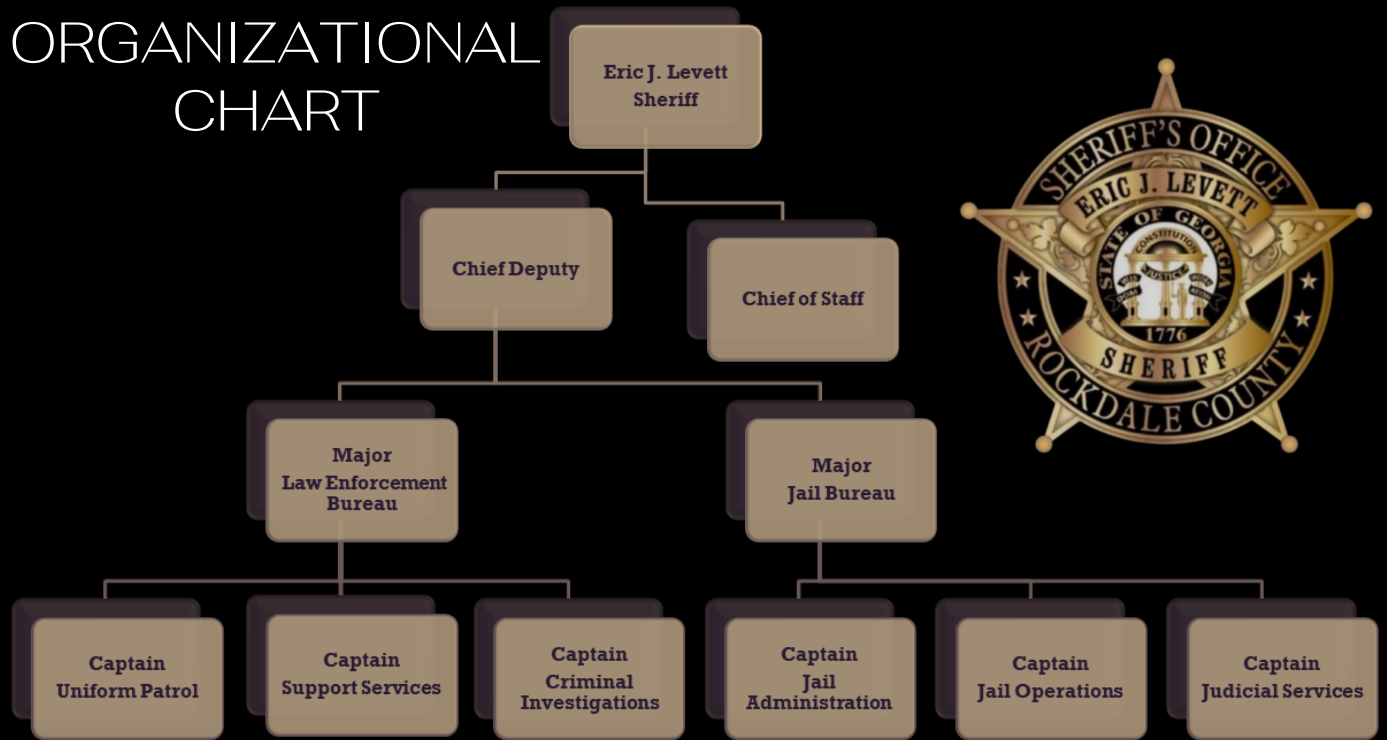
MISSION

The MISSION of the Rockdale County Sheriff's Office is to reduce crime, safely house inmates, bring offenders to justice, and perform the mandated services of the Office of Sheriff with the highest level of safety, professionalism, and integrity.



ALWAYS READY | ALWAYS PREPARED | MAKING ROCKDALE COUNTY SAFE

ORGANIZATIONAL CHART



MEET OUR TEAM

Strategic GOALS

01 CRIME
REDUCTION

02 TECHNOLOGY
&
EQUIPEMENT

03 PROFESSIONAL
DEVELOPMENT,
HIRING &
RETENTION



CRIME REDUCTION

Behavioral Health Co-Responder Program:

The Rockdale County Sheriff's Office understands the importance of protecting and serving the community, this includes persons who may have committed a crime. The Uniform Patrol Division has encountered several individuals committing crimes due to mental illness. Some illnesses that certified Deputies can't appropriately identify cause a mentally ill person to enter the criminal justice system. The implementation of the Co-responder program will help reduce the number of mentally ill persons inside the jail facility through a screen-out process. This process will require a mental health clinician to respond to calls where a Deputy has encountered a mentally ill person that has committed a crime to determine if jail is the right place for this person or do they need other resources.

Deployment of the Bicycle Unit:

According to research, the implementation of a bicycle unit increases the trust between law enforcement personnel and the community. Positive interactions will increase when the Deputy can stop in communities, get off their bicycle and play sports with children, provide resources to parents, or just wave and smile. The Rockdale County Sheriff's Office is dedicated to the community and the implementation of this program will show the community that we are willing to take the first step in the trust-building process.

Sheriff's Mobile Application (App):

The Rockdale County Sheriff's Office understands the need for effective communication and transparency with the community. To ensure effective communication, the Sheriff's Office will implement a mobile app that will provide real-time crime analysis, events, employment opportunities, complaint forms, and additional valuable resources.

Avigilon Cameras:

The Rockdale County Sheriff's Office has continuously implemented systems and programs to reduce crime. The implementation of the County Hotspot Cameras will help RCSO personnel monitor crime incidents in real-time. This will benefit the investigation and apprehension of criminals committing in-progress crimes such as entering automobiles.

Courthouse Security:

The Sheriff's Office has completed several assessments of the Courthouse and has determined that a security gate needs to be built surrounding the vehicle sally port to reduce the likelihood of escape and possible threat to the community.

Mental Health Treatment Facility:

The Rockdale County Jail has seen an increasing number of mentally ill offenders. Due to RCSO's proactiveness, we determined that there was a need for a facility that will provide the proper treatment to mentally ill persons who have committed criminal acts.



CRIME SCENE DO NOT CROSS
DO NOT CROSS
CRIME SCENE DO NOT CROSS

TECHNOLOGY & EQUIPMENT

The AXON logo, featuring a stylized 'A' icon followed by the word 'AXON' in a bold, sans-serif font, all contained within a white circle.

AXON Virtual Training Kits:

The Rockdale County Sheriff's Office is investing in this equipment to increase community engagement and trust. The training kit will be used by RCSO Deputies and the community for training on split second decisions. This will allow the community to understand what exactly a Deputy is experiencing when facing a dangerous incident.

Gang Intel Database:

RCSO plans to partner with surrounding agencies to develop a database of gang members known for committing criminal acts. This database will increase communication between local agencies and help identify and correlate incidents across counties.

The logo for SHOOTER DETECTION SYSTEMS, with the words 'SHOOTER', 'DETECTION', and 'SYSTEMS' stacked vertically in a bold, sans-serif font, all contained within a white circle.

Gunshot Detection Equipment:

According to RCSO data collection, Deputies respond to a great amount of shots fired calls. The implementation of this equipment will allow RCSO to better track when shots are being fired in a specific area. This will also be a benefit in possible active shooter incidents.

PROFESSIONAL DEVELOPMENT: HIRING & RETENION

Develop a Diverse, Highly Functional Workforce:

The Rockdale County Sheriff's Office understands the importance of its employees being in the greatest mental and physical shape. With this being said, RCSO will outsource therapists, guidance counselors, and nutritional and fitness coaches to ensure our employees are highly functional members of society.

Triple Crown Accreditation:

The Triple Crown Accreditation consist of the ACA, NCCHC, and CALEA. The successful completion of the process to obtain the Triple Crown Accreditation will identify the Rockdale County Sheriff's Office as a top agency.

Training and Educational Opportunities:

RCSO understands the importance of employees having adequate training. Building the personnel, personal characteristics will not only benefit the Sheriff's Office and community, it will provide them with a sense of understanding that the Sheriff's Office is willing to invest in their success.



COMMUNITY INVOLVEMENT



770-278-8000



911 Chambers Drive
Conyers, GA 30012



www.RockdaleSheriff.com



RockdaleSheriff



RockdaleCoSheriff

NEW!

ROCKDALE COUNTY SHERIFF'S OFFICE MOBILE APP



DOWNLOAD OUR APP!



Also available in app stores.

